

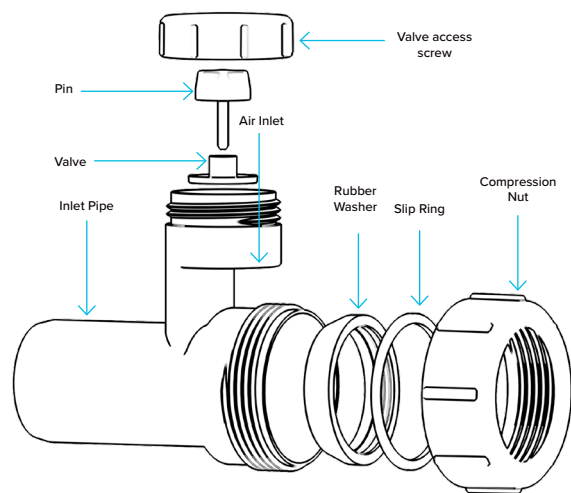


# ANTI-VAC ADAPTER



## WARNING

We shall not be responsible or liable for any failure of, or damage to, this plumbing product caused by the use of chlorine/bleach cleaners or related products added to the tank water. Use of such products will void the warranty and may result in product failure, possibly causing property damage. Do not over tighten plastic nuts and always turn off water supply when installing/removing toilet cistern parts.



Please note: Save this instruction sheet for future reference.  
**IMPORTANT: DO NOT** use plumber's putty to seal this fitting.

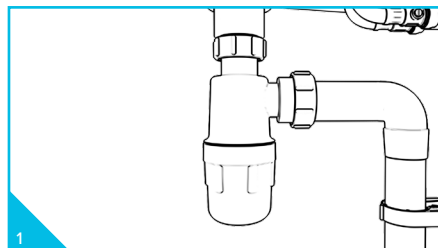
UK - Units 1-3 Capitol Trading Park, Kirkby Bank Road,  
Knowsley Industrial Estate, Liverpool, L33 7SY

EU - Authorised Rep Compliance Ltd, GroundFloor, 71 Lower  
Baggot Street, Dublin, D02 P593, Ireland.

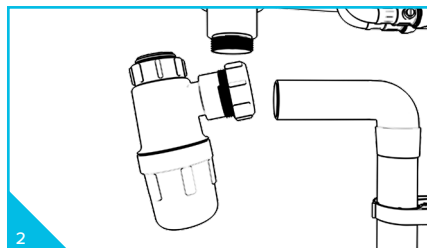
For more information please contact us:

Tel: 0151 546 0531 E-mail: [sales@vivasanitary.co.uk](mailto:sales@vivasanitary.co.uk)

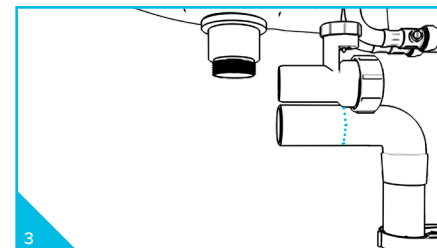
## > INSTALLATION INSTRUCTIONS



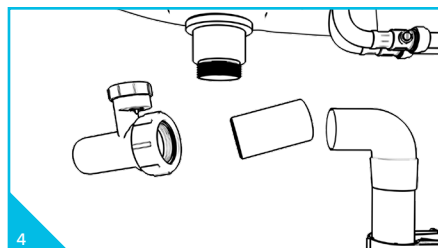
1 Ensure sufficient space for the Anti-Vac adapter to fit directly behind the trap.



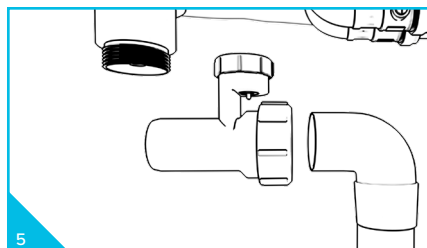
2 Remove the trap by unscrewing the nut that connects it to the waste, and then by removing the outlet nut. Firmly pull the trap off the pipework.



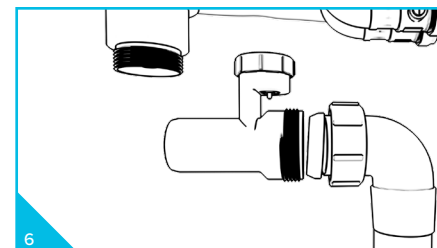
3 Line up the narrow end of the Anti-Vac adapter with the end of the pipework. Mark the pipework at the point where the adapter widens before the outlet nut.



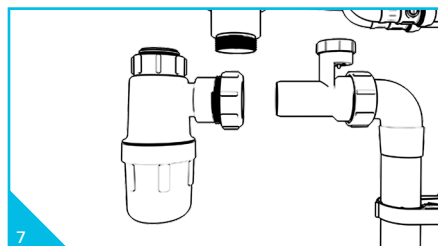
4 Cut the pipe to size and smooth the rough edges with some sand paper.



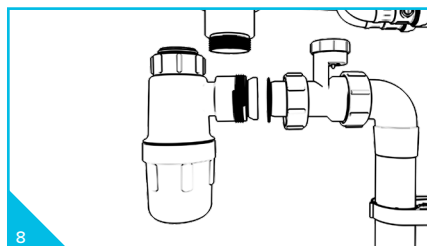
5 Take the Anti-Vac adapter and remove the compression nut, slip ring and rubber washer.



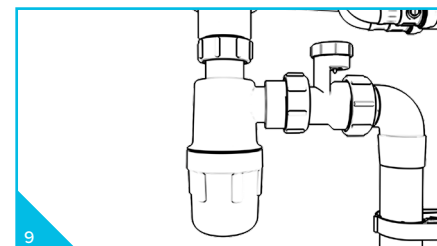
6 Place the nut, slip ring and rubber washer (in that order) over the waste pipe. Slide the threaded end of the Anti-Vac adapter over the pipe and screw the nut onto the thread tightly.



7 Fit the trap outlet onto the narrow end of the AntiVac adapter in the same way as described in step 6.



8 Do not over-tighten with tools. Hand tight is sufficient.



9 Screw the top nut of the trap back onto the waste thread and ensure a tight seal.

JOIN  
**PRO**<sup>+</sup>  
INSTALLERS CLUB

for exclusive benefits

[vivasanitary.co.uk/pro](http://vivasanitary.co.uk/pro)

Installation videos & further  
information available now.

